

Schnittwertempfehlung

Recommended speeds and feeds















Recommandation pour la valeur de coupe

Form 394, 395, 396, 397



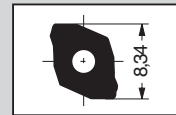
		F394	F395	F396	F397
Unlegierter Stahl <i>Unalloyed steel</i> Aciers non alliés laminés P St37 / St52	Schnittgeschwindigkeit <i>Cutting speed</i> Vitesse de coupe V _c (m/min)	180 – 240			
	Vorschub <i>Feed</i> Avance f (mm/U)	0,12	0,15	0,18	0,22
Legierter Stahl <i>Alloyed steel</i> Aciers alliés laminés P 16MnCr6	Schnittgeschwindigkeit <i>Cutting speed</i> Vitesse de coupe V _c (m/min)	160 – 220			
	Vorschub <i>Feed</i> Avance f (mm/U)	0,12	0,15	0,18	0,22
Hochlegierter Stahl <i>High alloyed steel</i> Aciers laminé fortement alliés P X32CrMoV5	Schnittgeschwindigkeit <i>Cutting speed</i> Vitesse de coupe V _c (m/min)	140 – 200			
	Vorschub <i>Feed</i> Avance f (mm/U)	0,10	0,12	0,15	0,19
Rostfreier Stahl <i>Stainless steel</i> Acier inoxydable M X6CrNi18 10	Schnittgeschwindigkeit <i>Cutting speed</i> Vitesse de coupe V _c (m/min)	80 – 140			
	Vorschub <i>Feed</i> Avance f (mm/U)	0,08	0,10	0,13	0,16
Grauguss <i>Grey cast iron</i> Fontes malléables K GG10-GG35	Schnittgeschwindigkeit <i>Cutting speed</i> Vitesse de coupe V _c (m/min)	190 – 260			
	Vorschub <i>Feed</i> Avance f (mm/U)	0,13	0,15	0,19	0,24
Sphäroguss <i>Spheroidal graphite cast iron</i> Fontes sphéroïdales K GGG40-GGG70	Schnittgeschwindigkeit <i>Cutting speed</i> Vitesse de coupe V _c (m/min)	180 – 240			
	Vorschub <i>Feed</i> Avance f (mm/U)	0,13	0,15	0,19	0,24
Aluminium Legierung, langspanend <i>Aluminium alloy, long-chipped</i> Alliages d'aluminium, copeaux longs bis 7%Si N	Schnittgeschwindigkeit <i>Cutting speed</i> Vitesse de coupe V _c (m/min)	350 – 500			
	Vorschub <i>Feed</i> Avance f (mm/U)	0,13	0,15	0,19	0,24
Aluminium Legierung, kurzspanend <i>Aluminium alloy, short-chipped</i> Alliages d'aluminium, copeaux courts 7-12%Si N	Schnittgeschwindigkeit <i>Cutting speed</i> Vitesse de coupe V _c (m/min)	300 – 400			
	Vorschub <i>Feed</i> Avance f (mm/U)	0,13	0,15	0,19	0,24



<p>Unlegierter Stahl <i>Unalloyed steel</i> Aciers non alliés laminé</p> <p>P</p> <p>St37 / St52</p>	<p>149 / WHC58</p>  <p>① ○○</p> <p>▼</p>	<p>152 / WHC102</p>  <p>② ○</p> <p>▼</p>						
<p>Legierter Stahl <i>Alloyed steel</i> Aciers alliés laminés</p> <p>P</p> <p>16MnCr6</p>	<p>149 / WHC58</p>  <p>① ○○</p> <p>▼</p>	<p>152 / WHC102</p>  <p>② ○</p> <p>▼</p>						
<p>Hochlegierter Stahl <i>High alloyed steel</i> Aciers laminé fortement alliés</p> <p>P</p> <p>X32CrMoV5</p>	<p>149 / WHC58</p>  <p>① ○○</p> <p>▼</p>	<p>152 / WHC102</p>  <p>② ○</p> <p>▼</p>						
<p>Rostfreier Stahl <i>Stainless steel</i> Acier inoxydable</p> <p>M</p> <p>X6CrNi18 10</p>	<p>142 / WHC35</p>  <p>① ○○</p> <p>▼</p>	<p>152 / WHC102</p>  <p>② ○</p> <p>▼</p>						
<p>Grauguss <i>Grey cast iron</i> Fontes malléables</p> <p>K</p> <p>GG10-GG35</p>	<p>149 / WHC32</p>  <p>① ○○</p> <p>▼</p>	<p>142 / WHC32</p>  <p>② ○○</p> <p>▼</p>						
<p>Sphäroguss <i>Spheroidal graphite cast iron</i> Fontes sphéroïdales</p> <p>K</p> <p>GGG40-GGG70</p>	<p>149 / WHC35</p>  <p>① ○○</p> <p>▼</p>	<p>142 / WHC35</p>  <p>② ○○</p> <p>▼</p>						
<p>Aluminium Legierung langspanend <i>Aluminium alloy, long-chipped</i> Alliages d'aluminium, copeaux longs</p> <p>N</p> <p>bis 7%Si</p>	<p>152 / WHW15</p>  <p>① ○○</p> <p>▼</p>							
<p>Aluminium Legierung, kurzspanend <i>Aluminium alloy, short-chipped</i> Alliages d'aluminium, copeaux courts</p> <p>N</p> <p>7-12%Si</p>	<p>152 / WHW15</p>  <p>① ○○</p> <p>▼</p>							



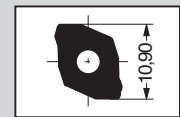
X



Geometrie Geometry Géométrie	Bestell-Nr. Schneidstoff Order No. Carbide grades No de cde. Matériaux de coupe	Radius Radius Rayon	Toleranzklasse Tolerance group Groupe de tolérances	ISO-Bezeichnung ISO Code Désignation ISO	P	M	K	N
142	F394 04 MN 142 (297 401) WHC32 0,4 M XOMT070304 2						○	▼
	F394 04 MN 142 (297 401) WHC35 0,4 M XOMT070304 1				○ ○	○ ○	○ ○	▼
	F394 04 MN 142 (297 401) WHW15 0,4 M XOMT070304 1						○ ○	○ ○ ▼
149	F394 04 MN 149 (297 400) WHC32 0,4 M XOMT070304 1						○ ○	▼
	F394 04 MN 149 (297 400) WHC35 0,4 M XOMT070304 1				○ ○		○ ○	▼
	F394 04 MN 149 (297 400) WHC58 0,4 M XOMT070304 1				○ ○		○ ○	▼
	F394 04 MN 149 (297 400) WHW15 0,4 M XOMT070304 2						○ ○	▼
152	F394 04 MN 152 (297 402) WHC35 0,4 M XOMT070304 1				○ ○	○ ○	○ ○	▼
	F394 04 MN 152 (297 402) WHC102 0,4 M XOMT070304 2				○ ○	○ ○	○ ○	▼
	F394 04 MN 152 (297 402) WHW15 0,4 M XOMT070304 1							○ ○ ▼

Zubehör/Ersatzteile Accessories/Spare parts Accessoires/Pièces de rechange	Schlüsselweite Key size Dim. de la clé	Anziehdrehmoment Torque Couple de serrage	Bestell-Nr. Order No. No de cde.
Senkschraube Countersunk screw Vis à tête conique	M 2,5 x 7	T8 1,1 Nm	215 915
Bedienungsschlüssel, Torx Service key, Torx Clé de service Torx	T8		115 590
Drehmoment-Schraubendreher, Torx Torque screwdriver, Torx Clé dynamométrique, Torx	T8	1,1 Nm	415 514

Bestell-Beispiel / Ordering example / Exemple de commande :
F394 04 MN 142 WHC32 (297 401 WHC32)

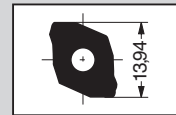


Geometrie <i>Geometry</i> Géométrie	Bestell-Nr. Schneidstoff <i>Order No.</i> <i>Carbide grades</i> No de cde. Matériaux de coupe	Radius <i>Radius</i> Rayon	Toleranzklasse <i>Tolerance group</i> Groupe de tolérances	ISO-Bezeichnung <i>ISO Code</i> Désignation ISO	P	M	K	N
142	F395 06 MN 142 (297 404) WHC32 0,6 M XOMT09T306 2						○	▼
	F395 06 MN 142 (297 404) WHC35 0,6 M XOMT09T306 1				○	○	○	▼
	F395 06 MN 142 (297 404) WHW15 0,6 M XOMT09T306 1						○	○
149	F395 06 MN 149 (297 403) WHC32 0,6 M XOMT09T306 1						○	▼
	F395 06 MN 149 (297 403) WHC35 0,6 M XOMT09T306 1				○	○	○	▼
	F395 06 MN 149 (297 403) WHC58 0,6 M XOMT09T306 1				○	○	○	▼
	F395 06 MN 149 (297 403) WHW15 0,6 M XOMT09T306 2						○	○
152	F395 06 MN 152 (297 470) WHC35 0,6 M XOMT09T306 1				○	○	○	▼
	F395 06 MN 152 (297 470) WHC102 0,6 M XOMT09T306 2				○	○	○	▼
	F395 06 MN 152 (297 470) WHW15 0,6 M XOMT09T306 1							○

Zubehör/Ersatzteile <i>Accessories/Spare parts</i> Accessoires/Pièces de rechange	Schlüsselweite <i>Key size</i> Dim. de la clé	Anziehdrehmoment <i>Torque</i> Couple de serrage	Bestell-Nr. <i>Order No.</i> No de cde.
Senkschraube <i>Countersunk screw</i> Vis à tête conique	M3x7,5	T8 1,2 Nm	215 985
Bedienungsschlüssel, Torx <i>Service key, Torx</i> Clé de service Torx	T8		115 590
Drehmoment-Schraubendreher, Torx <i>Torque screwdriver, Torx</i> Clé dynamométrique, Torx	T8	1,2 Nm	415 514



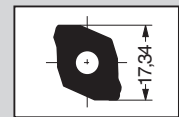
Bestell-Beispiel / Ordering example / Exemple de commande :
F395 06 MN 142 WHC32 (297 404 WHC32)













Geometrie Geometry Géométrie	Bestell-Nr. Schneidstoff Order No. Carbide grades No de cde. Matériaux de coupe	Radius Rayon	Toleranzklasse Tolerance group Groupe de tolérances	ISO-Bezeichnung ISO Code Désignation ISO	P	M	K	N
142	F396 08 MN 142 (297 406) WHC32 0,8 M XOMT12T308 2						○	▼
	F396 08 MN 142 (297 406) WHC35 0,8 M XOMT12T308 1				○	○	○	○
	F396 08 MN 142 (297 406) WHW15 0,8 M XOMT12T308 1						○	○
149	F396 08 MN 149 (297 405) WHC32 0,8 M XOMT12T308 1						○	○
	F396 08 MN 149 (297 405) WHC35 0,8 M XOMT12T308 1				○		○	
	F396 08 MN 149 (297 405) WHC58 0,8 M XOMT12T308 1				○		○	
	F396 08 MN 149 (297 405) WHW15 0,8 M XOMT12T308 2						○	○
152	F396 08 MN 152 (297 471) WHC35 0,8 M XOMT12T308 1				○	○	○	○
	F396 08 MN 152 (297 471) WHC102 0,8 M XOMT12T308 2				○	○	○	○
	F396 08 MN 152 (297 471) WHW15 0,8 M XOMT12T308 1							○

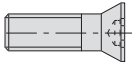
Zubehör/Ersatzteile Accessories/Spare parts Accessoires/Pièces de rechange	Schlüsselweite Key size Dim. de la clé	Anziehdrehmoment Torque Couple de serrage	Bestell-Nr. Order No. No de cde.
Senkschraube Countersunk screw Vis à tête conique	M 3,5 x 11	T15 3,0 Nm	415 320
Bedienungsschlüssel, Torx Service key, Torx Clé de service Torx	T15		115 664
Drehmoment-Schraubendreher, Torx Torque screwdriver, Torx Clé dynamométrique, Torx	T15	3,0 Nm	415 510

Bestell-Beispiel / Ordering example / Exemple de commande :
F396 08 MN 142 WHC32 (297 406 WHC32)



Geometrie <i>Geometry</i> Géométrie	Bestell-Nr. Schneidstoff <i>Order No.</i> <i>Carbide grades</i> No de cde. Matériaux de coupe	Radius <i>Radius</i> Rayon	Toleranzklasse <i>Tolerance group</i> Groupe de tolérances	ISO-Bezeichnung <i>ISO Code</i> Désignation ISO	P	M	K	N
142	 F397 08 MN 142 (297 408) WHC32 0,8 M XOMT160508 2						○	▼
	 F397 08 MN 142 (297 408) WHC35 0,8 M XOMT160508 1				○	○	○	○
	 F397 08 MN 142 (297 408) WHW15 0,8 M XOMT160508 1						○	○
149	 F397 08 MN 149 (297 407) WHC32 0,8 M XOMT160508 1						○	○
	 F397 08 MN 149 (297 407) WHC35 0,8 M XOMT160508 1				○	○	○	○
	 F397 08 MN 149 (297 407) WHC58 0,8 M XOMT160508 1				○	○	○	○
	 F397 08 MN 149 (297 407) WHW15 0,8 M XOMT160508 2						○	○
152	 F397 08 MN 152 (297 472) WHC35 0,8 M XOMT160508 1				○	○	○	○
	 F397 08 MN 152 (297 472) WHC102 0,8 M XOMT160508 2				○	○	○	○
	 F397 08 MN 152 (297 472) WHW15 0,8 M XOMT160508 1							○

Zubehör/Ersatzteile <i>Accessories/Spare parts</i> Accessoires/Pièces de rechange	Schlüsselweite <i>Key size</i> Dim. de la clé	Anziehdrehmoment <i>Torque</i> Couple de serrage	Bestell-Nr. <i>Order No.</i> No de cde.
---	---	--	---

Senkschraube <i>Countersunk screw</i> Vis à tête conique	M4,5x11,5	T20	5,0 Nm	215 149	
Bedienungsschlüssel, Torx <i>Service key, Torx</i> Clé de service Torx		T20		215 150	
Drehmoment-Schraubendreher, Torx <i>Torque screwdriver, Torx</i> Clé dynamométrique, Torx		T20	5,0 Nm	415 543	



Bestell-Beispiel / Ordering example / Exemple de commande :
F397 08 MN 142 WHC32 (297 408 WHC32)